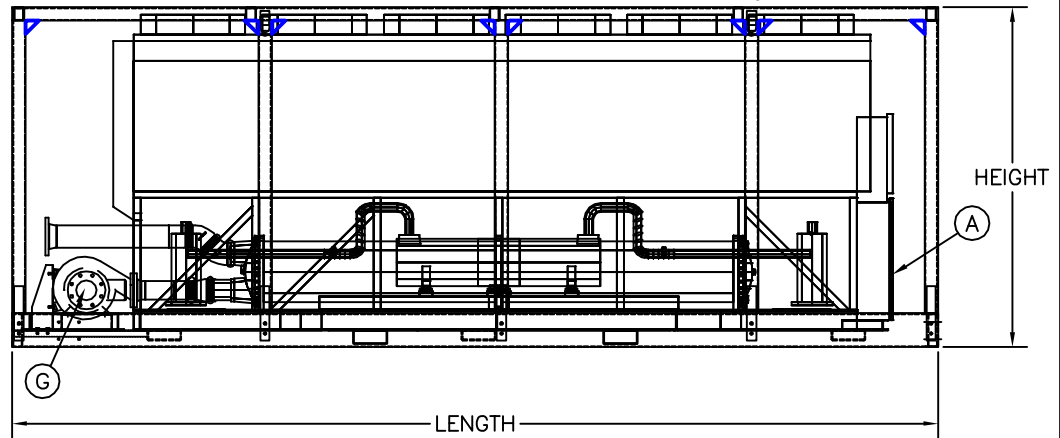
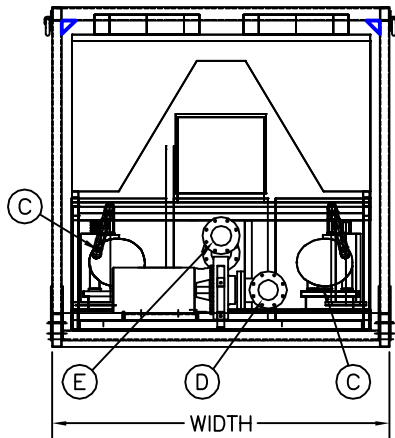
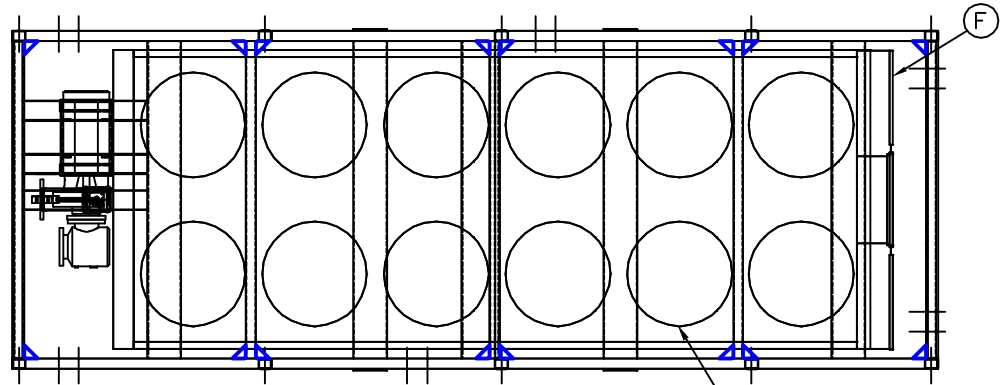


# TEMPAIR®

HVAC RENTAL SOLUTIONS

## TCA-200

- (A) CONTROL PANEL
- (B) CONDENSER FANS
- (C) COMPRESSORS
- (D) WATER INLET 6" dia
- (E) WATER OUTLET 6" dia
- (F) CAM-LOC POWER CONNECTIONS
- (G) PUMP



### UNIT SPECIFICATIONS:

POWER SUPPLY: 460V/3PH/600MOP/60HZ/455MCA  
 INCLUDING 30 HP PUMP

WATER DELIVERY: 550 GPM

WATER CONNECTION: 6" FLANGE

SOUND POWER LEVEL: 75dba

### DIMENSIONS:

LENGTH: 274"

WIDTH: 100"

HEIGHT: 101"

WEIGHT: 17,600 lb

### CLEARANCES:

CLEARANCE FRONT: 20"

CLEARANCE SIDES: 45"

CLEARANCE REAR: 44"

### EVAPORATOR PERFORMANCE:

CAPACITY, GALLON: 40

MAX. PRESSURE, PSI: 150

MIN. FLOW, GPM: 241

MAX. FLOW, GPM: 883

PRESSURE DROP: @ MIN. FLOW: 3.5 (FT. OF H2O)  
 @ MAX. FLOW: 38 (FT. OF H2O)

DESIGN LWT °F: 40

DESIGN EWT °F: 50

DRAWN: JH	UPDATED: JH
DATE: 02/12/13	DATE: 05/08/17

ESTD



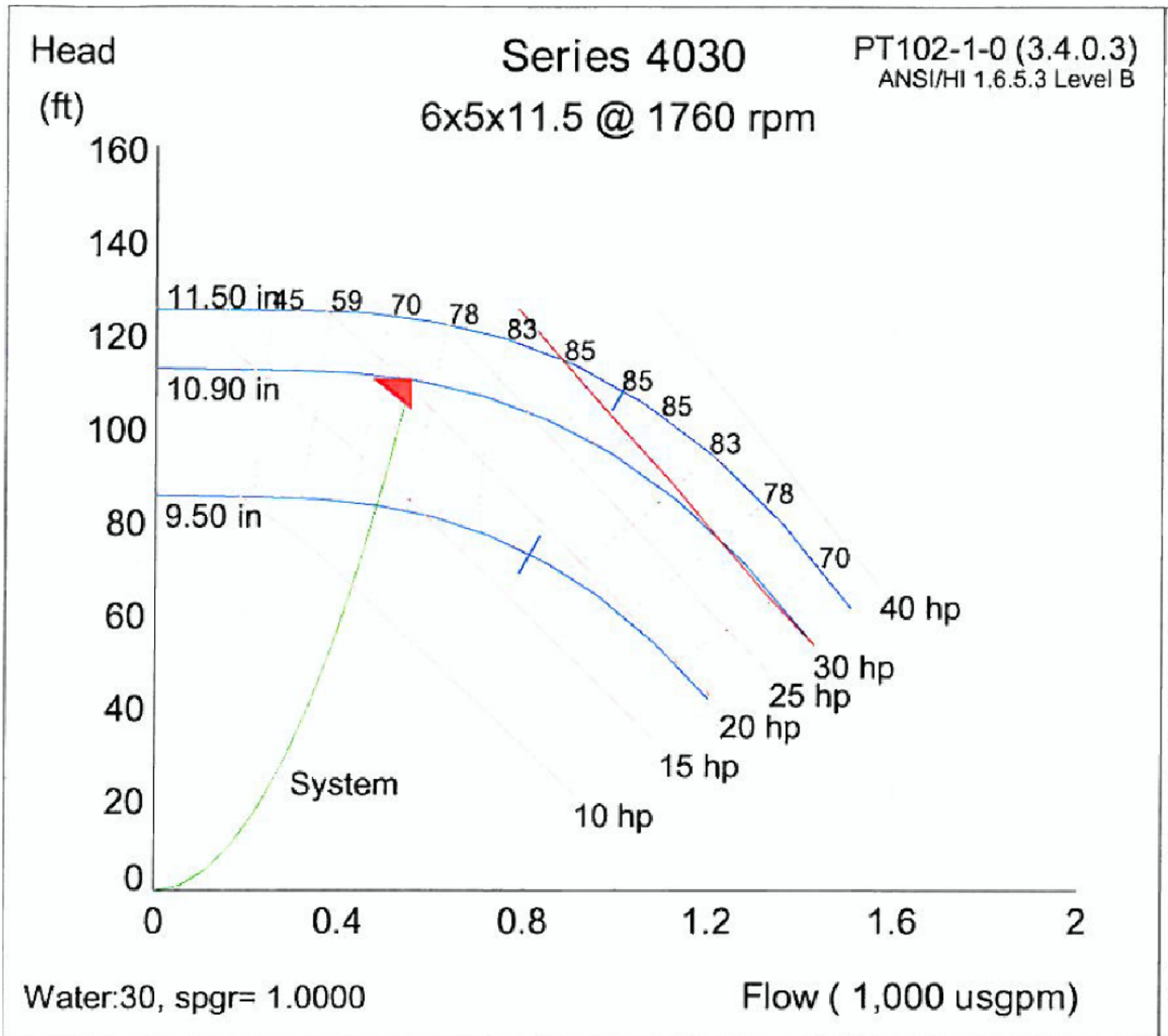
1985

# TEMPAIR®

HVAC RENTAL SOLUTIONS

## TCA-200

### PUMP PERFORMANCE



DRAWN: CC	UPDATED:
DATE: 5.08.17	DATE:

ESTD



1965

# TEMPAIR®

## HVAC RENTAL SOLUTIONS

# TCA-200

## Performance Data TCA-200

60 Hz standard efficiency – I-P units

Evap Leaving Water Temp (°F)	Cond Entering Air Temp (°F)											
	85			95			105			115		
	Tons	kW Input <sup>2</sup>	EER <sup>3</sup>	Tons	kW Input <sup>2</sup>	EER <sup>3</sup>	Tons	kW Input <sup>2</sup>	EER <sup>3</sup>	Tons	kW Input <sup>2</sup>	EER <sup>3</sup>
40	198.5	201	10.9	185.1	217.8	9.4	171.3	236.9	8.1	156.9	258.3	6.8
42	205.8	205.4	11	192	222.4	9.6	177.7	241.6	8.2	162.9	263.1	7
44	213.2	210	11.2	198.9	227.1	9.7	184.2	246.4	8.4	169	268.1	7.1
46	220.7	214.7	11.4	206	231.9	9.9	190.8	251.3	8.5	175.1	273.1	7.2
48	228.2	219.4	11.5	213.1	236.7	10	197.4	256.3	8.6	181.3	278.1	7.4

1. Rated in accordance with AHRI Standard 550/590: sea level altitude, evaporator fouling factor of 0.0001°F-ft<sup>2</sup>/h/Btu, evaporator temperature drop of 10°F, and 2 pass evaporator configuration.

2. kW input is for compressors only.

3. EER = Energy Efficiency Ratio (Btu/watt-hour). Power inputs include compressors, condenser fans and control power.

4. Interpolation between points is permissible. Extrapolation is not permitted.

### AHRI and Part Load Performance — 60 Hz — I-P units

Unit Size	Standard efficiency		IPLV
	Full Load Tons	Full Load EER	
200	198.9	9.7	13.6

1. IPLV values are rated in accordance with AHRI Standard 550/590.

2. EER and IPLV values include compressors, condenser fans, and control kW.

DRAWN: CC	UPDATED:
DATE: 5.08.17	DATE: